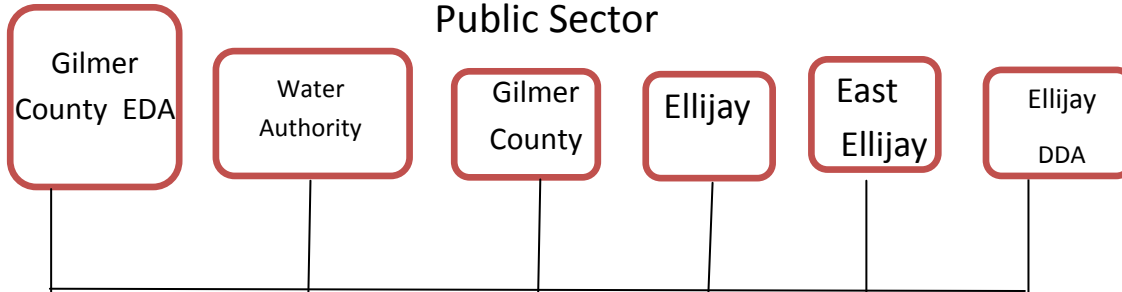


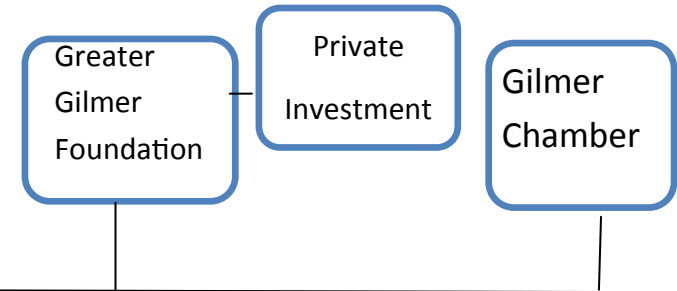
## The Catalyst Plan for Economic Development Efforts

A **collaborative model** for effective economic development efforts to promote our community in an increasingly competitive global environment.

### Public Sector



### Private Sector



Under this model, the EDC would be comprised of one representative from the EDA, DDA, Gilmer County, Ellijay, East Ellijay, the Greater Gilmer Foundation, Ellijay-Gilmer County Water and Sewerage Authority and the Gilmer Chamber. The EDC would meet periodically (perhaps quarterly) to provide high level general guidance to the Economic Development professional, who would be housed at the Chamber Office. The economic development professional would request information and assistance from the EDC on a case by case basis as the specific needs of a potential investor become apparent.

Monetary investment would come from Gilmer County, Ellijay, East Ellijay, Ellijay DDA, Ellijay-Gilmer County Water and Sewerage Authority and the Greater Gilmer Foundation. The EDA would continue to serve as the legal entity to make deals happen using their authority to float bonds, etc. to meet specific infrastructure needs for an investor.

Economic Development Council  
(One member from each stakeholder above)

Gilmer Chamber

Economic  
Development  
Marketing Professional

The Gilmer Chamber would assume the responsibility for day to day management of the economic development efforts through a contract for services between all entities. The Gilmer Chamber would provide support infrastructure for the ED professional. This infrastructure would consist of office space, office equipment, and support personnel. The Chamber president will provide day to day operational oversight and direction for the ED professional.